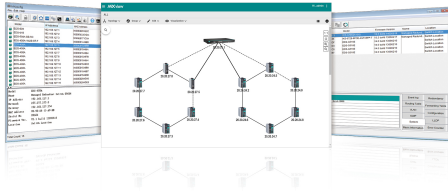


MXstudio Series

Industrial network management suite for installation, operation, maintenance, and diagnostics

Features and Benefits

- An all-in-one toolset for installation, operation, maintenance, and diagnostics stages of the network's life cycle
- MXconfig, MXview, and N-Snap for easy and quick industrial network management
- MXview ToGo mobile app for remote monitoring—anytime, anywhere
- Maximized productivity with Moxa's industrial Ethernet solutions

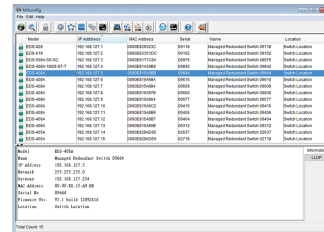


Introduction

Moxa's MXstudio industrial network management suite combines all the tools you need throughout the network's life cycle into one toolbox, including MXview industrial management software, MXconfig industrial network configuration tool, and N-Snap industrial network snapshot tool. Whether it is for configuration, monitoring, maintenance, or troubleshooting, the all-in-one MXstudio software suite has a tool for every task. In addition, MXstudio's three key benefits, easy configuration, smart visualization, and quick troubleshooting, are designed to meet the demands of industrial automation networks.

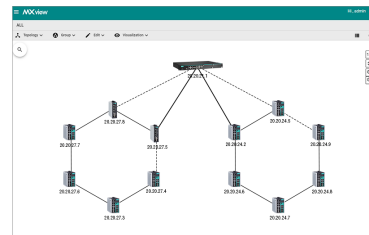
MXconfig Industrial Network Configuration Tool

- Mass configuration function to reduce setup time
- Security wizard for convenient setup of security-related parameters
- Topology analysis to eliminate manual setting errors
- Configuration overview for efficient management



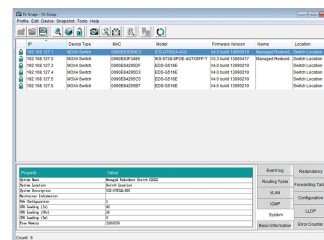
MXview Industrial Network Management Software

- Auto discovery of network devices and physical connections
- Color-coded VLAN groups and other visualized network data
- Security view for the security status of network devices
- Supports MXview ToGo mobile app for remote monitoring and notification—anytime, anywhere
- Provides RESTful API and web widget for integrating MXview into applications



N-Snap Industrial Network Snapshot Tool

- A stand-alone data collection tool to take network snapshots for quick troubleshooting
- Compares network and device data, and highlights the differences



Specifications

Hardware Requirements

RAM	8 GB
Hardware Disk Space	20 GB
OS	Windows 7 with Service Pack 1, Windows 10, Windows Server 2012 R2, Windows Server 2016
CPU	2 GHz or faster dual-core CPU

© Moxa Inc. All rights reserved. Updated Mar 29, 2019.

This document and any portion thereof may not be reproduced or used in any manner whatsoever without the express written permission of Moxa Inc. Product specifications subject to change without notice. Visit our website for the most up-to-date product information.