

# ADAM-6066

6-ch Digital Input and 6-ch Power Relay Module



ADAM-6066



## Specifications

### General

- LAN 10/100 Base-T
- Power Consumption 2.5 W @ 24 Vdc
- Watchdog Timer System (1.6 second) and Communication (programmable)
- Supports Peer-to-Peer
- Supports GCL
- Supports Modbus/TCP, TCP/IP, UDP and HTTP Protocols

### Digital Input

- Channels 6
- Dry Contact Logic level 0: close to GND  
Logic level 1: open
- Wet Contact Logic level 0: 0 ~ 3 V<sub>DC</sub>  
Logic level 1: 10 ~ 30 V<sub>DC</sub>
- Supports 3 kHz Counter Input (32-bit + 1-bit overflow)
- Supports 3 kHz Frequency Input
- Supports Inverted DI Status

### Relay Output (Form A)

- Channels 6
- Contact Rating AC: 250 V @ 5 A  
DC: 30 V @ 5 A
- Breakdown Voltage 500 V<sub>AC</sub> (50/60 Hz)
- Relay On Time 7 ms
- Relay Off Time 3 ms
- Total Switching Time 10 ms
- Insulation Resistance 1 GΩ at 500 V<sub>DC</sub> Protection
- Maximum Switching Rate 20 operations/minute (at rated load)
- Supports Pulse Output

### Protection

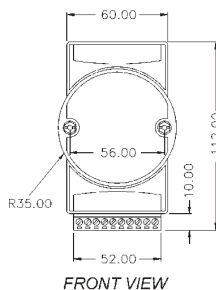
- Power Reversal Protection
- Isolation Voltage 2,000 V<sub>DC</sub>

### Environment

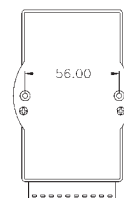
- Humidity (Operating) 20 ~ 95% RH (non-condensing)
- Humidity (Storage) 0 ~ 95% RH (non-condensing)
- Operating Temperature -10 ~ 70° C
- Storage Temperature -20 ~ 80° C

## ADAM-6000 Series Dimensions

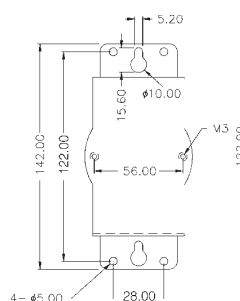
Unit: mm



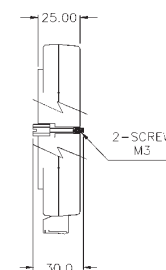
FRONT VIEW



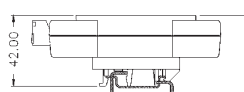
REAR VIEW



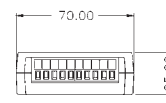
PANEL MOUNTING BRACKET



SIDE VIEW



DIN - RAIL MOUNTING ADAPTER



TOP VIEW

## Ordering Information

- ADAM-6066 6-ch DI and 6-ch Power Relay Module

## ADAM-6000 I/O Module Common Specifications

### General

- Dimension (W x H x D) 70 x 112 x 25 mm
- Enclosure ABS+PC
- Mounting DIN 35 rail, stack, wall