

Moxa MXview

Quick Installation Guide

First Edition, January 2010



© 2010 Moxa Inc. All rights reserved.
Reproduction without permission is prohibited.

Fl.4, No.135, Lane 235, Pao-Chiao Rd. Shing Tien City, Taipei, Taiwan,
R.O.C.

TEL: +886-2-8919-1230

P/N: 1802000000060

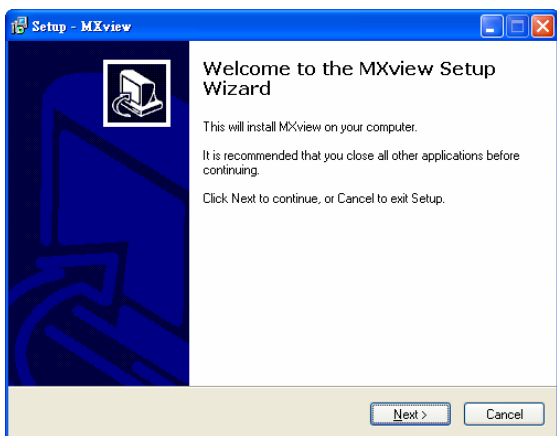
System Requirements

- Processor: Intel Core 2 Duo 2.4 Ghz or higher CPU.
- Memory: 1G or higher.
- Operating System: Windows XP Professional, 2000, Server 2003.
- Disk space: 10G or greater.

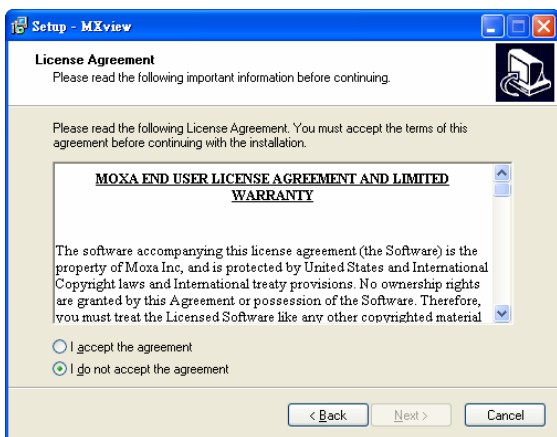
Installing Moxa MXview Server on Windows

STEP 1: Insert the Moxa MXview CD into your computer's CD drive and wait for the installation program to launch. If the installation program does not launch automatically, run the setup program by double clicking the **setup.exe** icon.

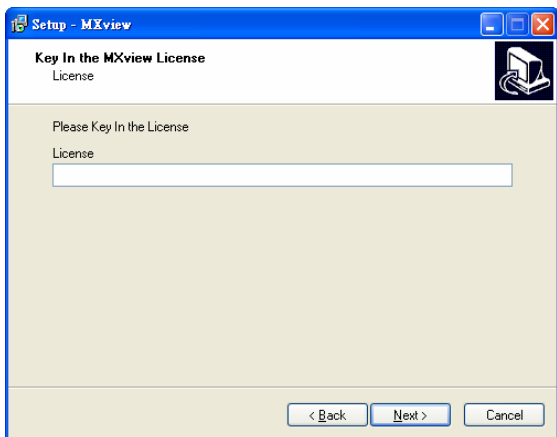
STEP 2: Click **Next** to install MXview.



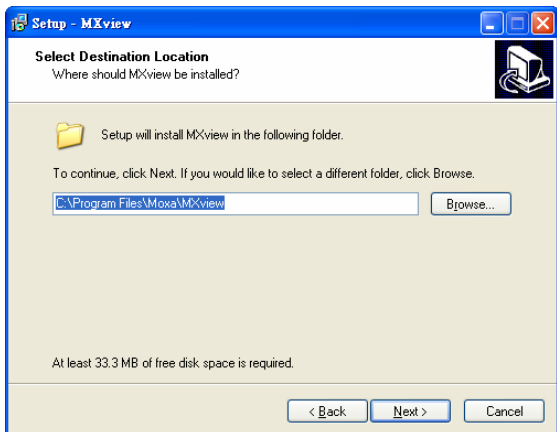
STEP 3: Read the License Agreement carefully, and then click **I accept the agreement**. Click **Next** to continue.



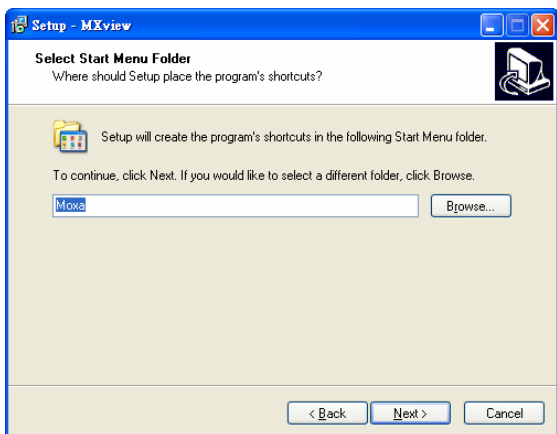
STEP 4: Enter your license key, and then click **Next**. If the key is correct the installation program will continue.



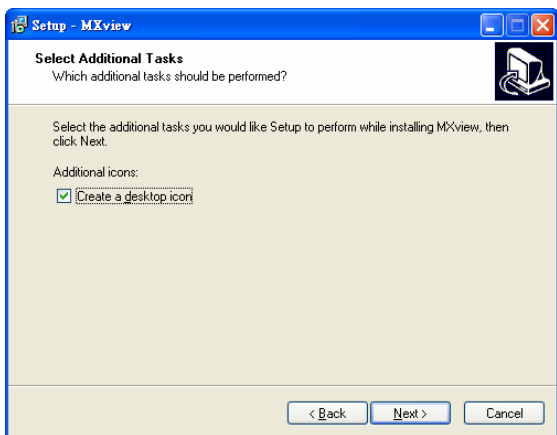
STEP 5: The setup program will specify a default folder in the “Program Files” folder. You may modify this file path if you wish. Then, click **Next** to continue.



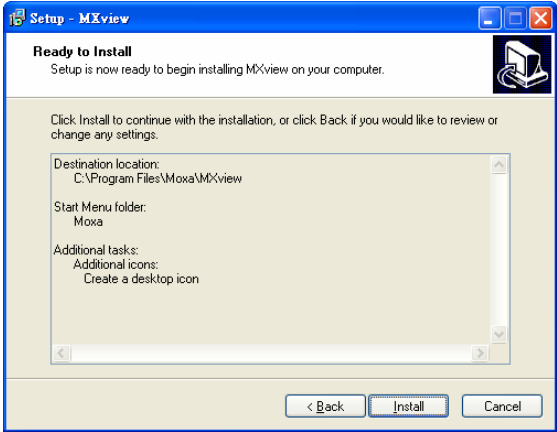
STEP 6: The setup program will specify a default folder for the Start Menu shortcuts. You may modify this file path if you wish. Then, click **Next** to continue.



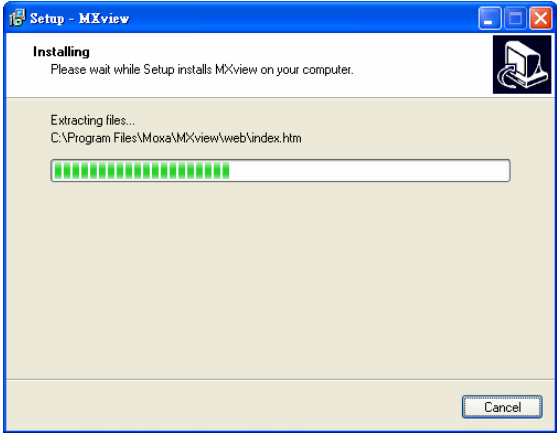
STEP 7: Select the **Create a desktop icon** checkbox if you would like to create a desktop shortcut for the MXview Server. Then, click **Next** to continue.



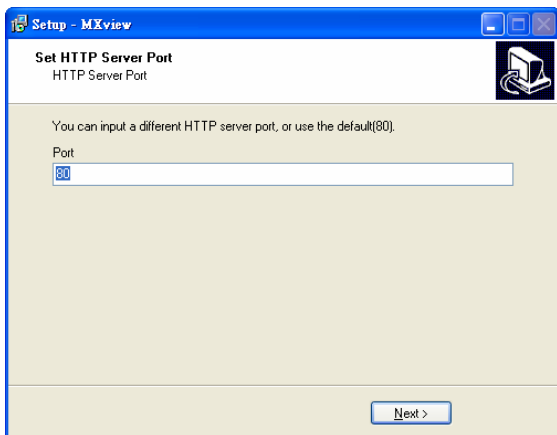
STEP 8: Verify that the folder is correct, and then click **Next** to continue.



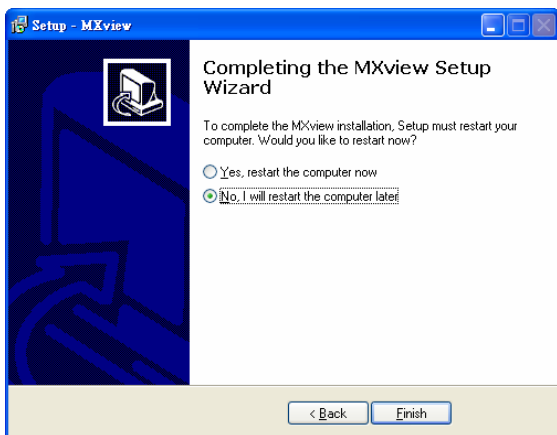
STEP 9: Wait while the software is installed.



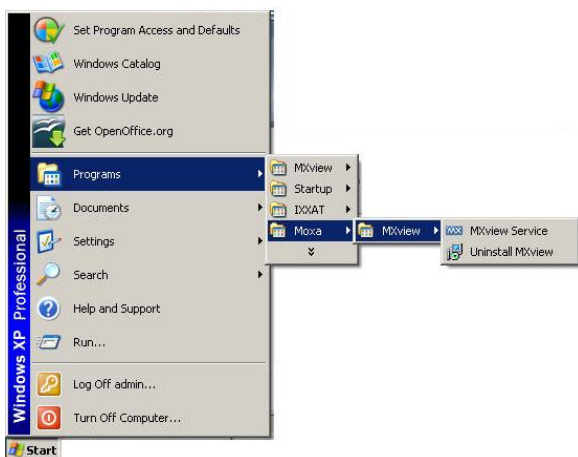
STEP 10: Input a new HTTP server port, or use the default. And then click **Next**.



STEP 11: Click **Finish** to complete the installation.



STEP 12: To open the user interface of the MXview Server, click **Start → Programs → Moxa → MXview → MXview Service**.



Service Information

Customer satisfaction is our number one concern. To ensure that customers receive the full benefit of our products, we have created an online Customer Support area at:

<http://www.moxa.com>

Use the following e-mail address to contact a Moxa technical support engineer:

support@moxanet.com

Technical Support Contact Information

www.moxa.com/support

Moxa Americas:

Toll-free: 1-888-669-2872

Tel: +1-714-528-6777

Fax: +1-714-528-6778

Moxa China (Shanghai office):

Toll-free: 800-820-5036

Tel: +86-21-5258-9955

Fax: +86-10-6872-3958

Moxa Europe:

Tel: +49-89-3 70 03 99-0

Fax: +49-89-3 70 03 99-99

Moxa Asia-Pacific:

Tel: +886-2-8919-1230

Fax: +886-2-8919-1231