

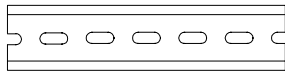
DR-120-24 INSTALLATION AND OPERATION

Mounting Instructions

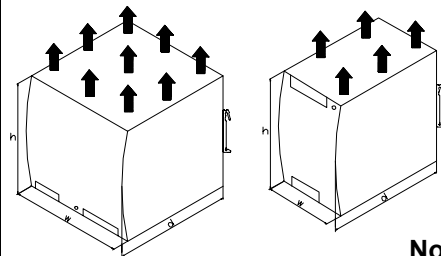
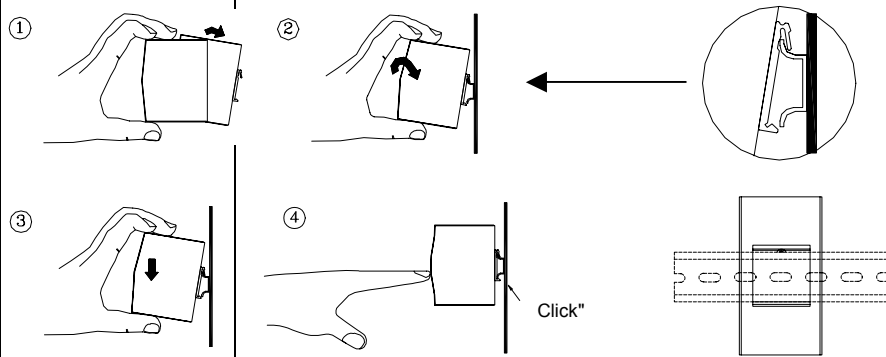
Mounting: To allow sufficient room for cooling, mount only as shown in the figure, with the input terminals facing upwards.

Admissible DIN-Rails: TS35/7.5 or TS35/15

For rail fastening:



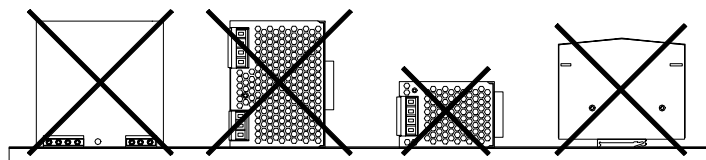
- (1) Tilt the unit slightly rearwards.
- (2) Fit the unit over the top hat rail.
- (3) Slide the unit downwards until it hits the stop.
- (4) Press against the bottom to lock in place.
- (5) Shake the unit slightly to make sure it is secure.



HOT!
Do not touch side and rear walls when unit is in operation!

- Convective cooling
- Do not cover upper and lower wall surface!
 - Leave sufficient space around the unit for cooling!
- Housing screws are for internal grounding. Do not remove them!

Not Allowed



Notes On Safety

Read instructions:

Before working with the power supply, read these instructions carefully and completely, and make sure you understand everything! You should also be sure to comply with the notes on the unit itself!

Disconnect the system from the supply voltage:

Before installing, doing maintenance, or making modifications, disconnect your system from the supply voltage. Make sure that any unintended connections in the circuit are impossible!

Before using the unit:

Ensure appropriate installation

Warning! Improper installation/operation may impair safety and result in operating trouble, or even destruction of the unit.

The unit should only be installed and put into service by appropriately qualified operators.

Before operating the unit, the following conditions must be checked:

- ⊙ When using flexible cables, all strands must be properly fastened to the terminal blocks.
- ⊙ The unit must be properly fused.
- ⊙ All output lines must be rated for the power supply output current and must be connected with the correct polarity.
- ⊙ Use a minimum of 80 °C wire.
- ⊙ The terminal torque should be 7 N-m.
- ⊙ Connector cables should be 0.5 – 5 mm².

Do not make modifications when operating the unit!

As long as the unit is in operation, do not modify the installation! The same warning applies to the secondary side of the connection. There exists a risk of electric arcs and electric shock—which could put your life in danger!

The unit will get very hot! Do not touch the unit when in operation, or shortly after it is disconnected!

Dimensions

SIZE/WEIGHT	WIDTH	HEIGHT	DEPTH	WEIGHT
• DR-75	55.5 mm	125 mm	100 mm	550 g
• DR-120	65.5 mm	125 mm	100 mm	650 g

TERMINAL PIN NO. ASSIGNMENTS

TB1: AC INPUT	TB2: DC OUTPUT	
PIN 1: \perp	PIN 1,2: +V	
PIN 2: AC/N	PIN 3,4: -V	PIN3: AC/L



Moxa Technologies Co., Ltd.

Tel: +886-2-8919-1230

www.moxa.com

Fax: +886-2-8919-1231

support@moxa.com.tw